

RETRACTABLE PATIO AWNINGS

PERFORMANCE SERIES





PRODUCTS PROUDLY MADE IN THE USA BY: FUTUREGUARD BUILDING PRODUCTS, INC. | 101 MERROW ROAD, AUBURN, ME 04210 | WWW.SUMMERSPACE.COM



OUR CUSTOMER FOR LIFE PROMISE

Retractable awnings originated to fill a need for energy conservation during the summer months in Europe decades ago, while allowing them to be retracted in the winter to let the warm sunlight in. Roll forward to today, with new designs and engineering, you have products that combine Function with Fashion. Our SummerSpace® Retractable Awnings have a beautiful, sleek Italian design coupled with exquisite German engineering. These globally designed products are proudly Made In the USA by the industry's finest craftsmen and women, and sold throughout North America. Our third generation family-owned and operated company produces the parts and the completed awnings in our over 400,000 square foot, high tech factory. Our ability to control every aspect of the manufacturing process allows us to focus on a level of Quality and Service unmatched by anyone. We look forward to the opportunity to earn your business. Our goal is simple: We want to grow a relationship with you built on Trust, we want you to be "A Customer for Life." We will work tirelessly to make sure we deliver on that promise.

Sincerely,

The SummerSpace Team

A photograph of a dining area. In the foreground, a table with a teal tablecloth holds a plate of green apples and a stack of books. A white cabinet with a lattice pattern is on the left, topped with a black wire lamp and a potted plant. On the wall are two framed botanical prints. To the right, a window looks out onto a balcony with a black and white striped retractable awning and lush greenery.

PIZZAZZ

Beautiful, stunning retractable awnings never fail to make a bold statement.

They are a quintessential ingredient in exceptional design and outdoor comfort.




SUMMERSPACE[®]
OUTDOOR LIVING REDEFINED



TRADITIONAL



CLASSIC STYLE AND SUPERIOR STRENGTH DEFINE THE TRADITIONAL RETRACTABLE AWNING BY SUMMERSPACE®. OUR MODEL 150 WITH ITS SLEEK DESIGN AND ATTRACTIVE FABRIC-WRAPPED FRONT BAR AND VALANCE WILL ADD A TOUCH OF ELEGANCE TO ANY HOME. THIS AWNING OFFERS MANY OPTIONS TO MAKE IT THE PERFECT ADDITION TO YOUR OUTDOOR SPACE.



TRADITIONAL

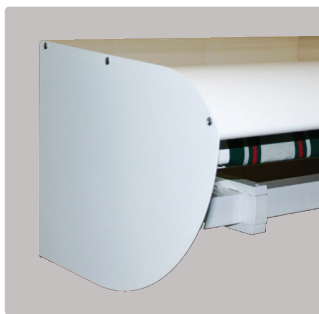
Sleek, strong and reliable best describe the SummerSpace® Performance Series Traditional Awning. This premium awning is constructed with the finest materials including forged arm joint components and high-grade aircraft quality extrusions. An articulating forged shoulder design provides easily adjustable pitch up to 45 degrees and incredible durability that surpasses expectations. This model is a great option for those customers looking for a traditional style retractable awning that is manufactured with commercial strength. The Traditional model comes in widths up to 26 feet wide with projections reaching 14 feet 6 inches. With the full array of SummerSpace color choices, the Traditional retractable awning allows you to enjoy refined style and unmatched quality.



SHOWN WITH SOLAR DROP SCREEN IN CHALK P06.



THE SUMMERSPACE® WIND/MOTION SENSOR PROVIDES WIND PROTECTION, RETRACTING THE AWNING WHEN WINDS EXCEED A SAFE SPEED.



THE WEATHERGUARD™ HOOD HELPS TO PROTECT THE AWNING'S FABRIC FROM THE ELEMENTS.



ARMS HAVE A CHAIN TENSIONING SYSTEM FOR QUIET OPERATION AND RELIABLE PERFORMANCE.



PATENTED ARTICULATING SHOULDERS PROVIDE ADJUSTABLE PITCH CONTROL.



STYLE

SEMI-CASSETTE



WITH INCREDIBLE STRENGTH AND AERO-DYNAMIC APPEARANCE, OUR MODEL 250 SEMI-CASSETTE RETRACTABLE AWNING BY SUMMERSPACE® HAS AN INTEGRATED HOOD WHICH WRAPS AROUND THE BACK TO COVER THE FABRIC COMPLETELY. THE SLEEK FRONT BAR CLOSES TIGHT TO PROTECT THE ENTIRE ROLL WHEN RETRACTED.

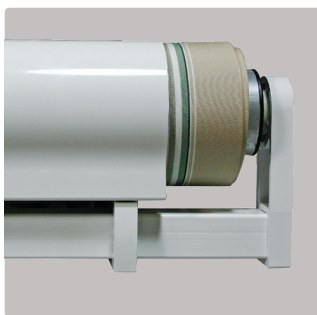


SEMI-CASSETTE

The SummerSpace® Performance Series Semi-Cassette Awning adds style and elegance with incredible functionality. Its contemporary cassette design allows the awning to blend in with your home's facade discretely when closed, and makes a stunning statement when open. This German engineered awning is strong enough for commercial use and challenging residential applications. Patented articulating shoulders provide easy pitch control, drop forged arm and shoulder components guarantee endurance, and an integrated wrap-around hood closes tightly to protect the fabric when retracted. The semi-cassette is great for wall mount, as well as roof mount installations. The awning is virtually maintenance free and is closed for the winter the same way it closed for the evening.



THE SUMMERSPACE® WIND/MOTION SENSOR PROVIDES WIND PROTECTION, RETRACTING THE AWNING WHEN WINDS EXCEED A SAFE SPEED.



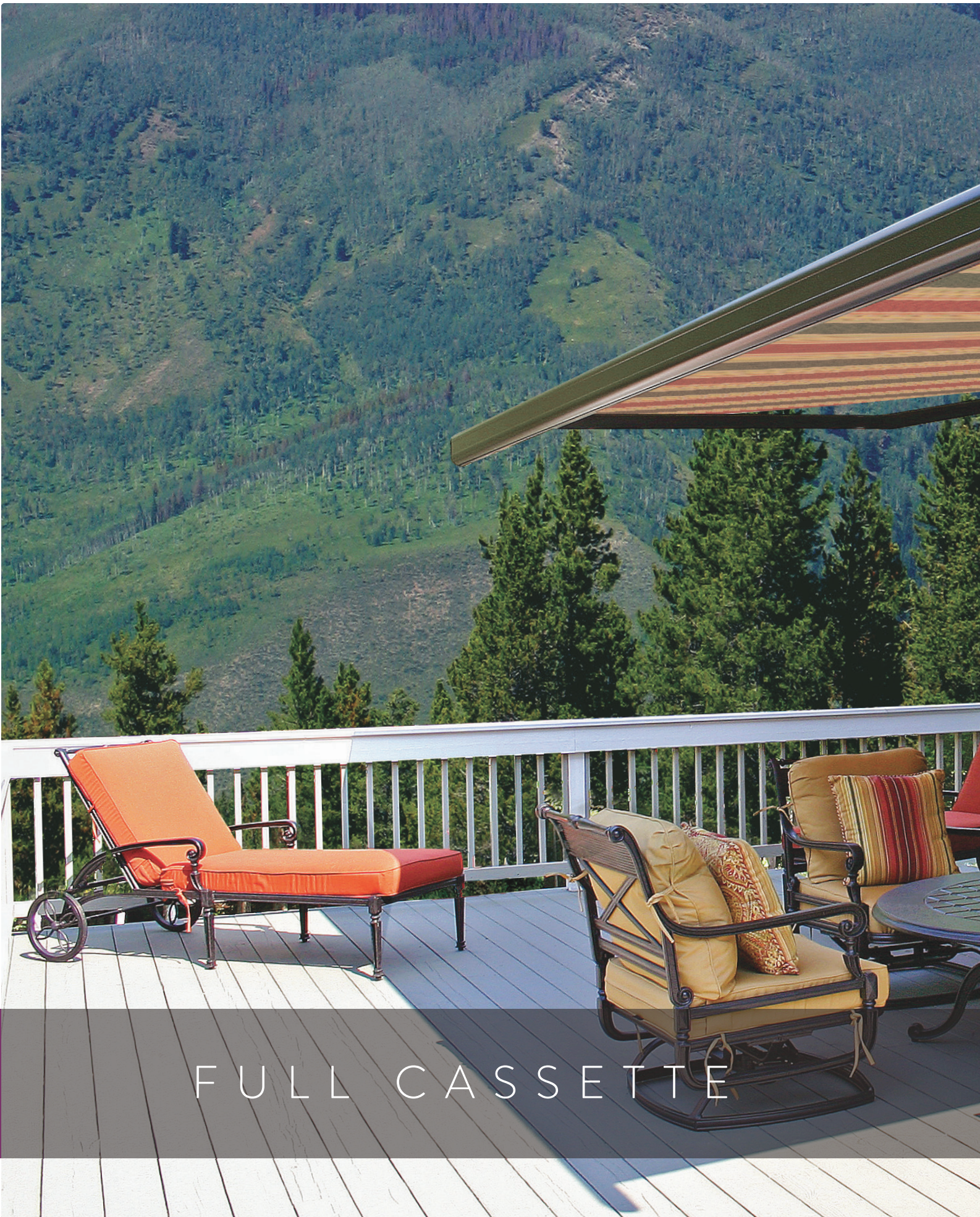
THE PARTIALLY ENCLOSED HOOD IS DRAWN DOWN THE BACK TO FULLY COVER THE ROLL OF FABRIC.



WHEN CLOSED, THE FABRIC IS COMPLETELY PROTECTED. THIS AWNING IS PERFECT FOR ROOF MOUNTS.



PATENTED ARTICULATING SHOULDERS PROVIDE ADJUSTABLE PITCH CONTROL.



STYLE

FULL CASSETTE



OUR FULL CASSETTE MODEL 300 RETRACTABLE AWNING BY SUMMERSPACE® IS THE PERFECT SOLUTION FOR INSTALLATIONS WITH MINIMAL MOUNTING SPACE. THIS BEAUTIFUL, GERMAN-ENGINEERED AWNING IS ELEGANT WHEN FULLY EXTENDED. WHEN CLOSED, IT TAKES UP JUST SIX INCHES OF SPACE AS THE CASSETTE COMPLETELY COVERS AND PROTECTS THE FABRIC.



FULL CASSETTE

The SummerSpace® Performance Series Full Cassette Awning is the perfect solution for installations with minimal mounting space. At 6 inches tall, this full cassette awning is the smallest lateral arm retractable awning available from SummerSpace. The combination of its compact, state of the art design and its elegant, fully-enclosed cassette define the term “quality.” The German engineered/designed double wall extrusions and drop forged arm components make this awning strong and beautiful. When closed, it’s sleek design simply disappears into your home’s exterior. Great for waterfront properties, this awning’s cassette closes for the winter the same way it closes for the evening without any seasonal maintenance. For those customers whom like to find things the way they left them, there is no better option.



THE SUMMERSPACE® WIND/MOTION SENSOR PROVIDES WIND PROTECTION, RETRACTING THE AWNING WHEN WINDS EXCEED A SAFE SPEED.



WHEN THE AWNING IS COMPLETELY CLOSED, THE CASSETTE PROTECTS THE ENTIRE FABRIC ROLL.



SO COMPACT, THIS AWNING REQUIRES JUST 6" OF MOUNTING SPACE, AND TUCKS DISCREETLY AWAY.



PATENTED ARTICULATING SHOULDERS PROVIDE ADJUSTABLE PITCH CONTROL.

BREATHE

Slide open the doors and take it all in. There is a serenity that comes with the merging of nature and home. Your outdoor room will become your favorite space, complete with fresh air and a view.

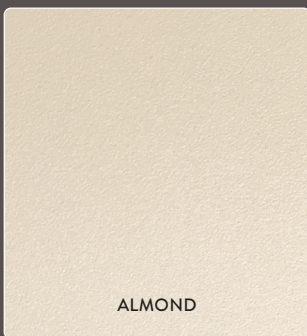




FABRICS

Shade your world with color and texture. Our awnings are crafted using the highest quality fabrics in the industry made by SummerSpace/Tempotest®. Choose from over 100 selections in solids, stripes, textures and tweeds.

OUR FOUR TEXTURED
POWDER-COATED FRAME
COLORS OFFER A RICH,
LUXURIOUS FINISH



SUMMERSHIELD™

All powder coatings and applications are not created equal. Our industry leading pretreatment, and proprietary SummerShield powder coating finish, exceeds AAMA 2604 specifications including 3,000 hour salt spray testing. This super durable finish includes UV inhibitors that extend the life of the beautiful, fade resistant finish. Our finish is low gloss and lightly textured, adding an upscale look discerning buyers expect on high performance products. SummerShield takes it one step further by infusing our coatings with anti-microbial technology for the ultimate in low maintenance finishes. You will find our Performance Series Awnings available in four stunning earth tone colors. We are sure you will find the perfect one just for you.



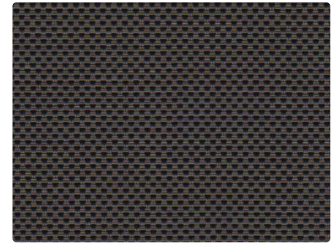
Our 31,000 square foot powder coating facility is fully automated from start to finish. Because of our 313-foot continuous powder coat line, we have the capability to coat frame parts and extrusions up to 30 feet in length at a line speed of 7 feet per minute.

Powder coat spray from both sides gives smooth, even, and complete coverage.

WE OFFER SIX DIFFERENT
PHIFER® SHEERWEAVE
FABRICS WITH 5% OPENNESS
FOR MORE SHADE & PRIVACY

DROP SCREENS

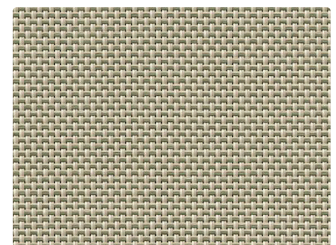
SummerSpace® drop screens provide additional shade protection from the sun when it is low in the sky. Sometimes, just the glare on a very sunny day can keep you from fully enjoying your deck or patio. Our drop screens are made using Phifer Sheerweave solar mesh which is the finest in the industry. Choose from one of our six beautiful color options and coordinate your entire awning for just the right look on your home or business. With just a touch of a button your rechargeable battery operated motor will silently extend or retract your drop screen in less than a minute. The lithium battery requires a simple charge once or twice a year depending on usage, and no unsightly cords will be visible during use of the screen.



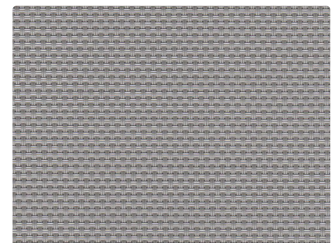
DARK BRONZE V96



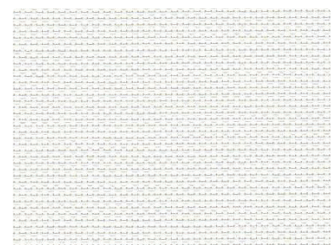
EBONY V10



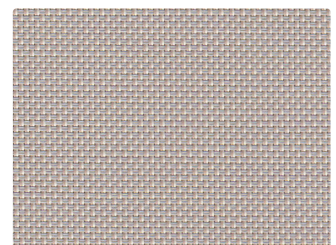
GOLDEN SAND Q60



PEWTER V07



CHALK P06



SAND STONE V44



PERFECTION IN MOTORIZATION

SUMMERSPACE MOTORS AND CONTROLS GIVE YOU
QUICK, EASY FUNCTIONALITY AT THE PUSH OF A BUTTON.



ROOF MOUNT

A PERFECT SOLUTION WHEN MOUNTING SPACE
REQUIREMENTS CAN NOT BE MET.

LINEN WEAVE *Colors shown may vary from actual materials. All colors and patterns are subject to change without notice. Please confirm at time of order.*

SummerSpace® Exclusive

LINEN WEAVE
 COLLECTION

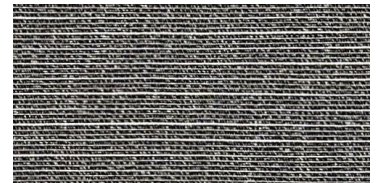
Rich earthtone colors combined with a crisp woven texture give an organic flair that's both casual and sophisticated.



Sand Dune # LW59



Toasted Sesame # LW60



Cobble Stone # LW61

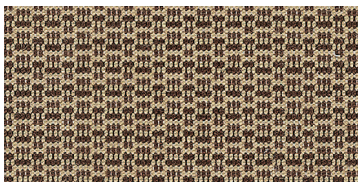


Brushed Silver # LW62



Simply Charcoal # LW97

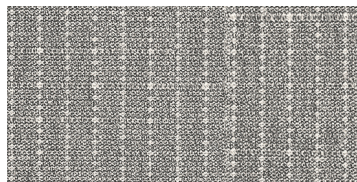
TEXTURES & TWEEDS *Colors shown may vary from actual materials. All colors and patterns are subject to change without notice. Please confirm at time of order.*



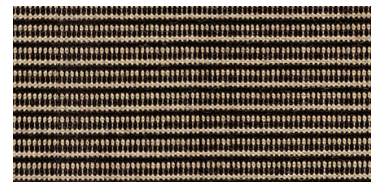
Coriander # T540652



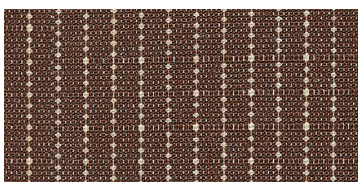
Pebble Tweed # T986727



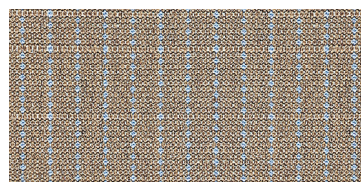
Ash Gessato # T1330505



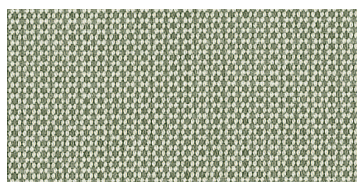
Sesame # T540752



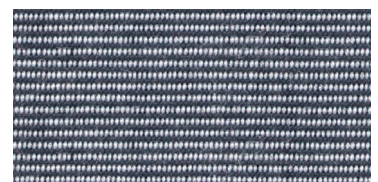
Hazelnut Gessato # T1330509



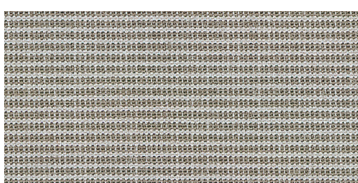
Toffee Gessato # T1330508



Sage Tweed # T40716



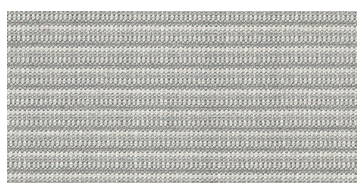
Silver Tweed # T40779



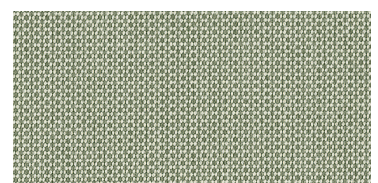
Driftwood Tweed # T407926



Dune Tweed # T873151



Silk Grey # T540715



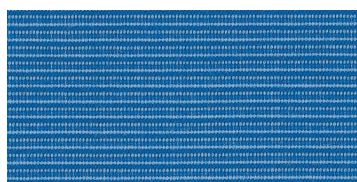
Lettuce Tweed # T87378



Carbon Fiber # T5406107



Seagrass # T540794



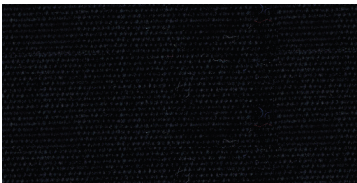
Skydiver # T540717



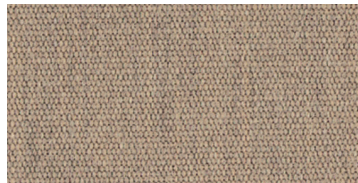
Greige # T1304

SOLIDS

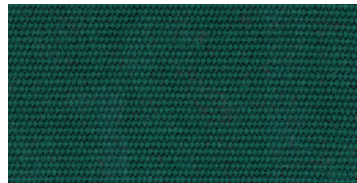
Colors shown may vary from actual materials. All colors and patterns are subject to change without notice. Please confirm at time of order.



Black # T24



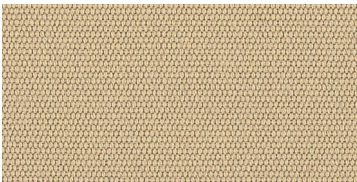
Toffee # T106



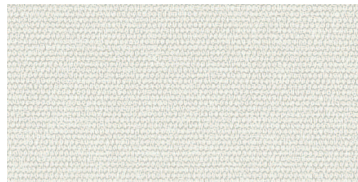
Forest Green # T5



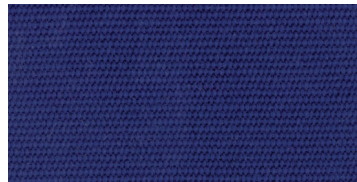
Driftwood # T926



Cappuccino # T102



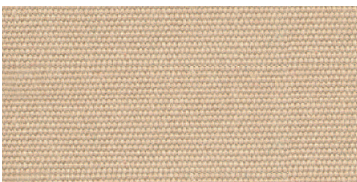
White # T15



Navy Blue # T75



Pebble # T72715



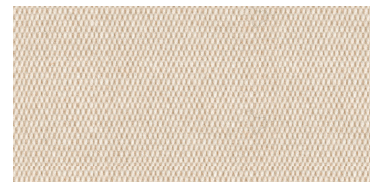
Beige # T52



Shoreline # T22



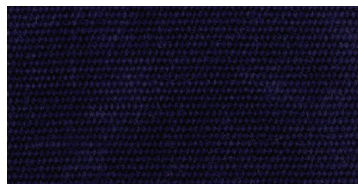
Crest Cement # T401591



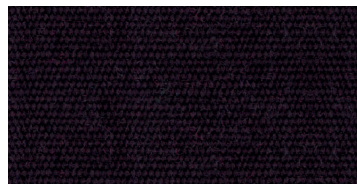
Latte # T1552



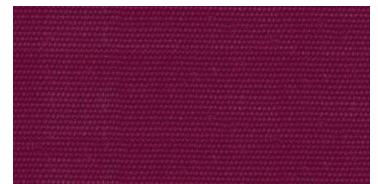
Mist # T1579



Indigo # T92



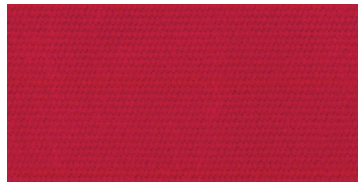
Chocolate # T81



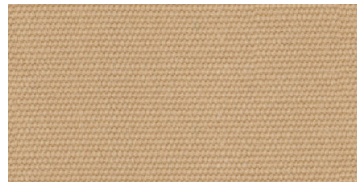
Burgundy # T73



Carbon # T107



Red # T11



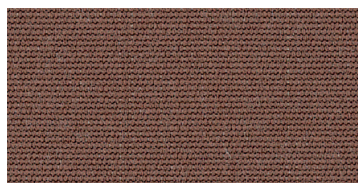
Tan # T14



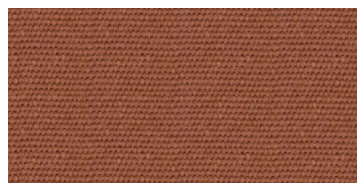
Pacific Blue # T416



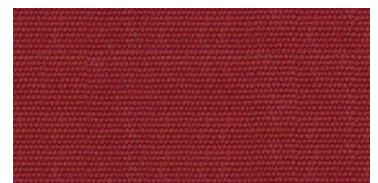
Spa # T7115



Sequoia # T571



Brown # T18



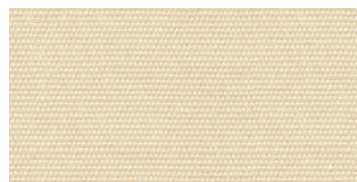
Rust # T84



Sapphire # T87



Cobalt # T10

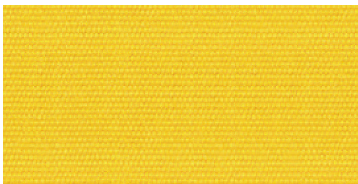


Cream # T151



Sunshine # T68412

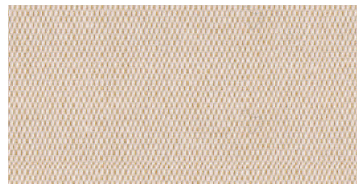
RETRACTABLE PATIO AWNINGS
TEMPOTEST® FABRICS



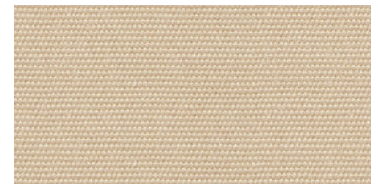
Sunflower # T12



Midnight Blue # T9713



Oyster # T1514



Pearl # 151929

STRIPES

Colors shown may vary from actual materials. All colors and patterns are subject to change without notice. Please confirm at time of order.



Navy/Grey Rib # T63610



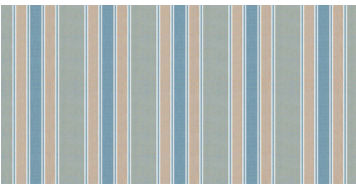
Chambray # T51672



Denim/Almond # T95192



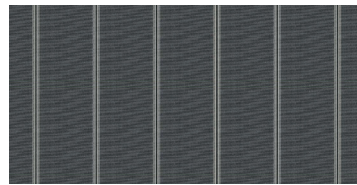
Brown Cream # T5349106



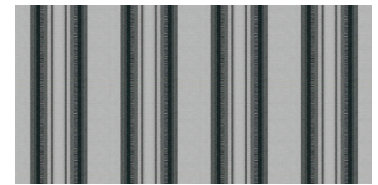
Winter Sky # T94821



Crème Latte # T5349930



Stockholm # T108124



Tuxedo # T95024



Burgundy/Natural # T501111



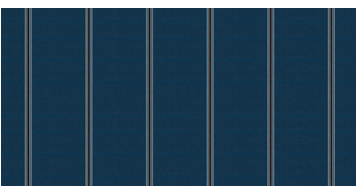
Black/White # T790



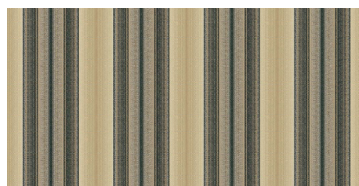
Navy/Beige # T64110



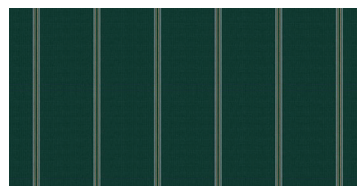
Steel Grey # T534879



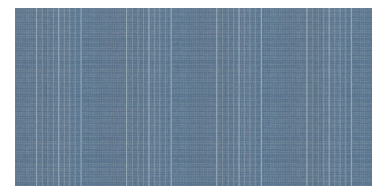
Oslo # T1081392



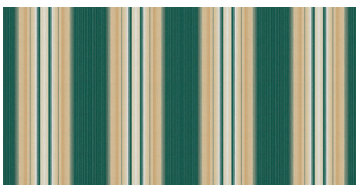
Cafe Au Lait # T94597



Lund # T1081305



Rebel Sapphire # T539687



Forest/Beige/Cream # T6365



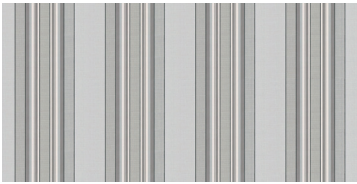
Brown/Natural # T501157



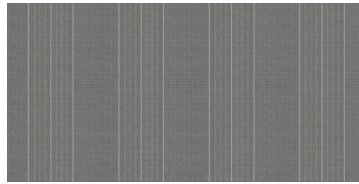
Rebel Hazelnut # T5396930



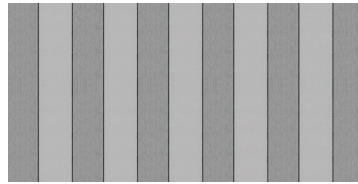
Chocolate Almond # T94991



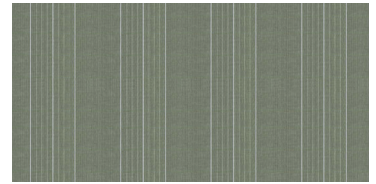
Grey Rib # T63379



Rebel Charcoal # T539697



Phantom Grey # T5371727



Rebel Green # T539678



Forest/Natural # T50117



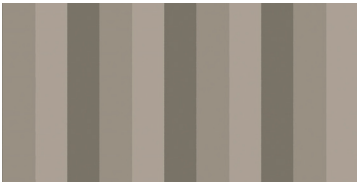
Mocha Cream Harmony # T539952



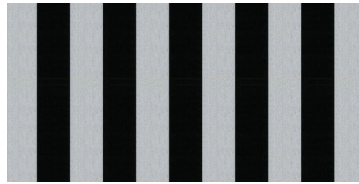
Meadow White # T534762



Bergen # T108197



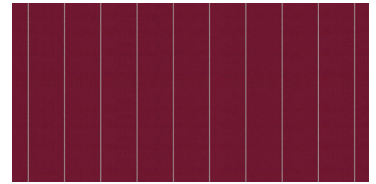
Greco Grey # T967926



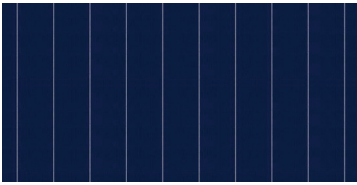
Black/Grey # T68



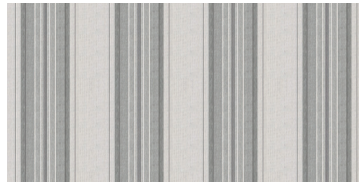
Bomber Blue # T517375



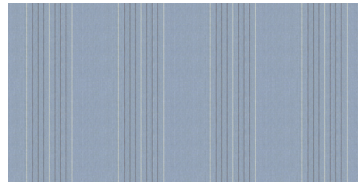
Norway # T79273



Finland # T79275



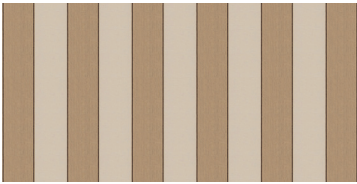
Platinum Grey # T534779



Rebel Blue # T539617



Forest Green/White # T33



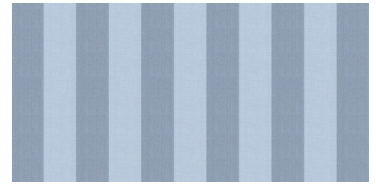
Champagne Brown # T5371106



Forest/Beige Slub # T63497



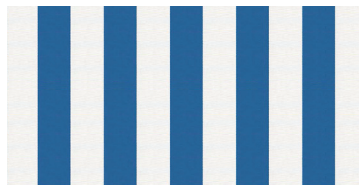
Bamboo Sienna # T94714



Cloudy Sky Blend # T539817



Grey Frost # T536179



Blue/White # T11615



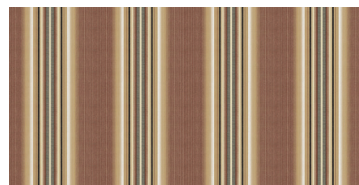
Lunar Rock Harmony # T539915



Forest Rib # T6385



Morel # T5370



Maple Sugar # T63614



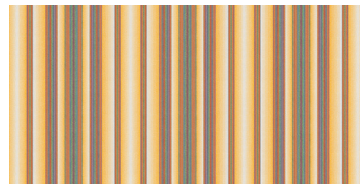
Cinnabar # T5349426



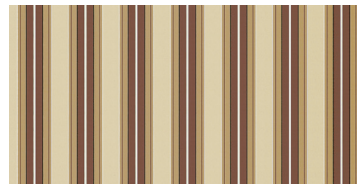
Rust/Cream # T63684



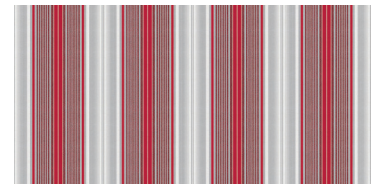
Tan Slub # T1120



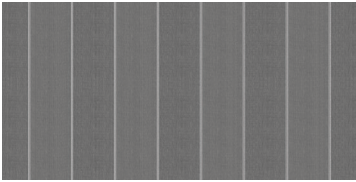
Yellow/Multi # T1243



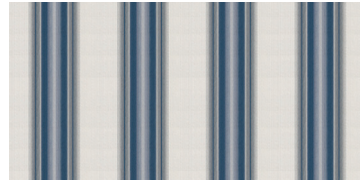
Chocolate Brown/Natural # T158



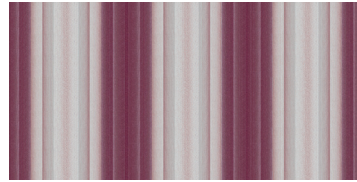
Scarlet/Grey # T516711



Winter Grey Harmony # T5399107



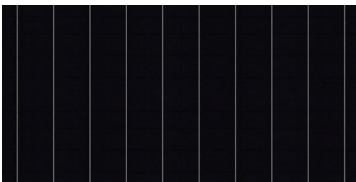
Navy Dusk # T535575



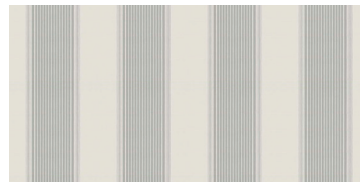
Burgundy/Grey # T500173



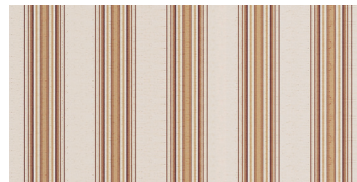
Rust/Green/Multi # T1150



Sweden # T79224



Silver Liberty # T5179



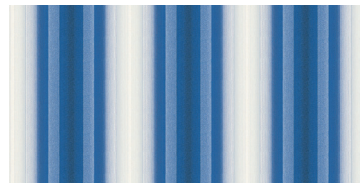
Beige/Brown Slub # T63999



Desert Dune Blend # T5398930



Charcoal Brown # T5369



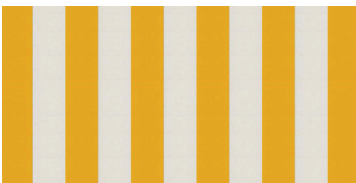
Royal/White # T500113



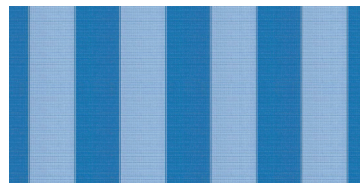
Pebble Tweed/White # T5372



Fresh Meadow Blend # 539878



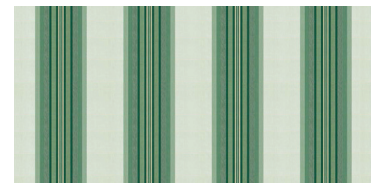
Yellow/White # T37



Blue Ice Harmony # T539917



Harvest # T1101



Emerald/Beige Liberty # T17105



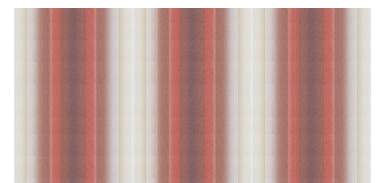
Key Lime # T739701



Forest/Beige # T50007



Roasted Peppers # T966426



Blush/Ivory # T500111

TEFLON® EXTREME BY PARÀ



Branded Parà Tempotest® fabrics benefit from a finishing process developed in partnership with Teflon®. Teflon® Extreme By Parà is a nanometric particle surface treatment that forms a molecular barrier around each fiber, providing double-action protection and a self-cleaning system that repels water and oil-based stains.

During the production process, the fabric is introduced into the Teflon® Extreme finishing bath creating a strong bond with the fiber and forming an invisible barrier. The highly-repellent component contained in the barrier helps water and rain to wash away dirt, eliminating marks and preserving the fabric's beauty and performance over time.

HI-CLEAN FINISHING



All Tempotest® fabrics are treated with a special type of finishing, called Hi-Clean, that creates an impenetrable barrier without compromising the fabric's breathability. The Hi-Clean finishing makes Tempotest fabrics repellent to water, grease, and oil as well as protects against rotting and the formation of mold and fungus. Hi-Clean makes the fabric self-cleaning, allowing dirt as well as fine dust and pollution to wash away with water or rain.

CONFIDENCE IN TEXTILES



This has been the motto of the independent test institutes of the International Oeko-Tex Association since 1992. Products of all types that are tested for harmful substances and found to pose no risk whatsoever to health are given the Oeko-Tex Standard 100 certificate of approval. Tempotest fabrics continually receive this designation.








SUMMERSPACE[®]
OUTDOOR LIVING REDEFINED

OUR STORY

SummerSpace® was born out of our desire to get people back outside to enjoy nature again.

We offer a wide array of products that give comfort from sun, rain and insects, creating an outdoor oasis for homeowners... a living space that brings people out of their cocoons, and brings friends and neighbors together at the same time.

We hope that you decide to try our products, and that you enjoy them for years to come. Their durability, beauty, and ease of use make them a perfect way to add comfortable living space to your home.



www.summerspace.com